

FOOTING AND FOUNDATION REQUIREMENTS

ONE & TWO FAMILY DWELLING FOUNDATION REQUIREMENTS

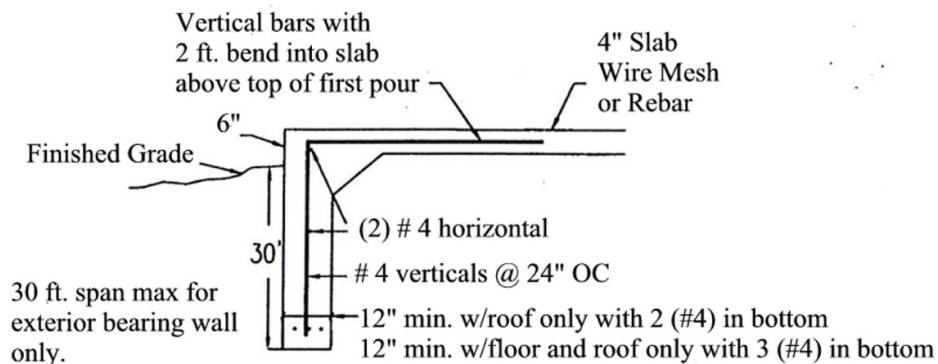
Chapter 4 Foundations: amend Table R403.1 by substituting with the following:

Foundations for Stud Bearing Walls Minimum Requirements Not for Basement Walls

Number of Stories	Minimum Thickness of foundation		Minimum Width of Footing	Minimum Thickness of Footing	Minimum Depth of Foundation below Natural Surface of Ground or Finish Grade
	Concrete	Unit Masonry			
1	8"	8"	16"	8"	30"
2	8"	8"	16"	8"	30"
3	10"	10"	20"	10"	30"
Vertical	#4 @ 48" on center	#4 @ 48" on center			
Horizontal	#4 @ 16" on center	Dur-wall 16" on center	(3) - #4's		

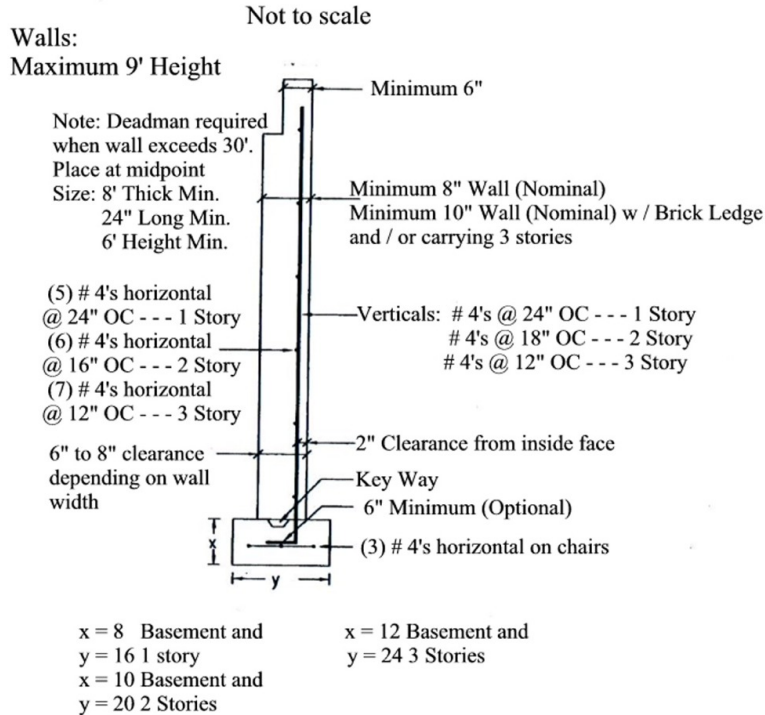
Monolithic Requirements

Not to Scale

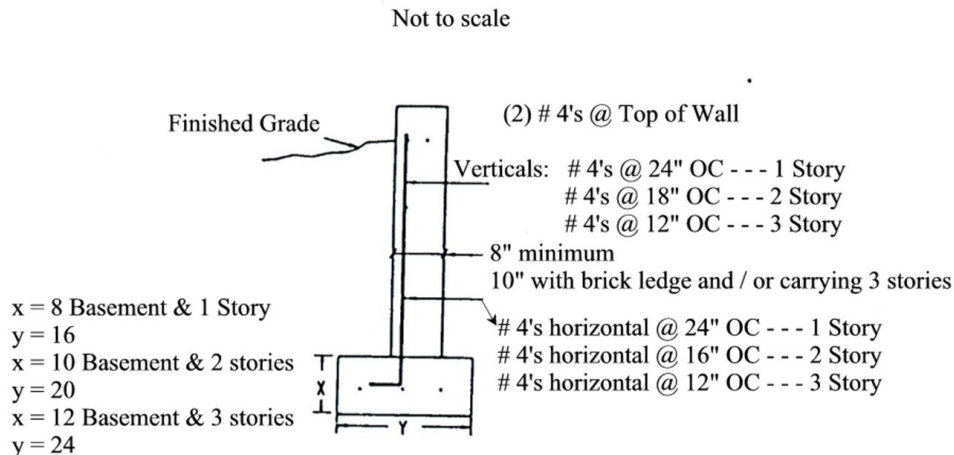


Concrete = Minimum 3,000 p.s.i.
 24 Hour waiting period between footing pour or basement wall pour.
 Floor slab reinforcing required - - - Minimum 6' x 6' # 10 wire mesh or # 3 reinforcing.
 3 ft. on center each way
 Lap splices for Reinforcement Min. 24"

Basement Requirements



Basement Requirements (Cont.) View Out

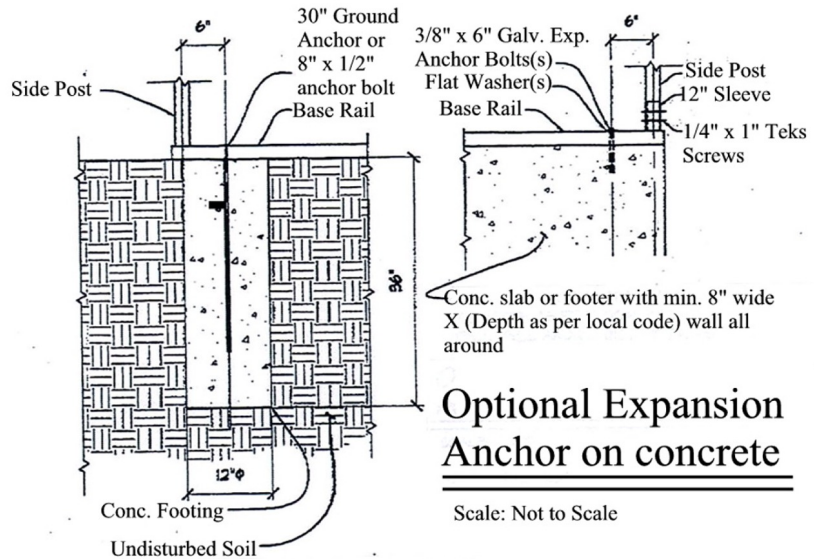


Metal Carport Requirements



Optional Helical Anchor

Mobile Home
Anchor



Optional Expansion Anchor on concrete

Scale: Not to Scale

Note: On level grade, dig a 12" hole 36" deep at each anchor point. Reposition base rails over holes and drop a ground anchor through each hole in base rails. Fill each hole with 3000 PSI concrete.

Optional Pin Anchor Detail On Concrete Footing